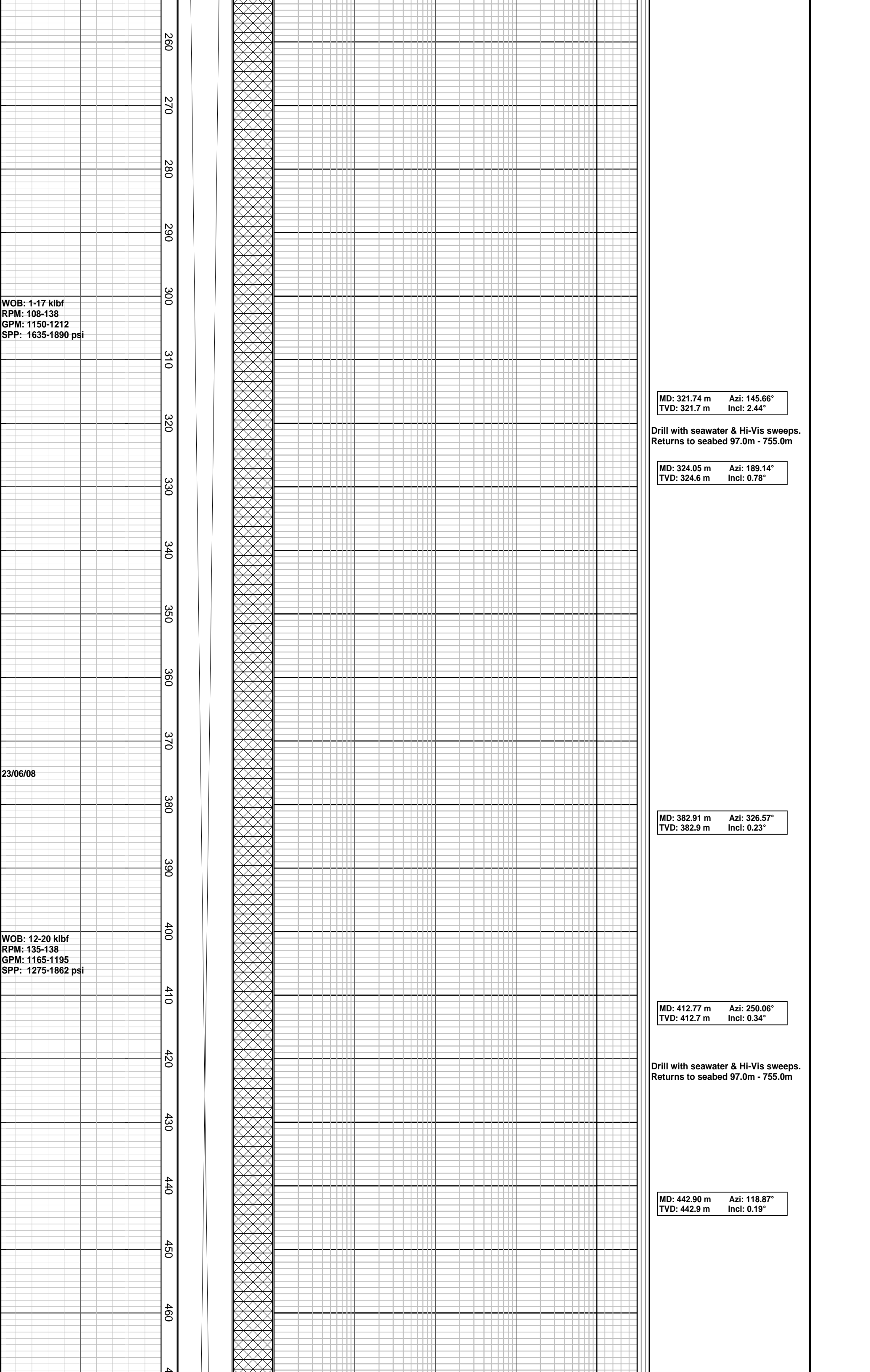




**Company :** Nexus Energy  
**Well :** Longtom-4  
**Interval :** 92.00 - 1831.46 meters  
**Created :** 02/Jul/2008 5:38:26 AM

FORMATION EVALUATION LOG									
Chromatograph Data					Analysis		LITHOLOGY DESCRIPTIONS		
Methane ppm							DIRECT FLUOR		
10   100   1000   10000									
Ethane ppm									
10   100   1000   10000									
Propane ppm									
10   100   1000   10000									
iso-Butane ppm									
10   100   1000   10000									
n-Butane ppm									
10   100   1000   10000									
iso-Pentane ppm									
10   100   1000   10000									
n-Pentane ppm									
10   100   1000   10000									
Ditch Gas %									
0.1   1   10   100									
ROP					MD meters 1-500		Cuttings		
200   160   120   80   40							INTERPRETED		
m/hr							LITHOLOGY		
WEIGHT ON BIT									
80   64   48   32   16									
klbf									
ROP BACKUP									
300   280   260   240   220									
m/hr									
RB1: 660mm (26") 914mm (36") H/Opener Make: Reed Type: Rock/YC11 Jets: 3x22, 1x16 Depth In: 97.0 m Depth Out: 132.0 m Drilled 35.0 m in 2.6hrs Grade: 1-1-WT-A-0-I-NO-TD					100		Spud Longtom-4 @ 01:20 hrs on 21/06/08		
Set 762mm (30") x 610mm (24") casing shoe at 128.86 mMDRT					110		Drill with seawater & Hi-Vis sweeps. Returns to seabed 97.0m - 755.0m		
22/06/08					120		Drill 36" hole section to 132.0m		
RB2: 559mm (22") Make: Smith Type: Rock/M23173 Jets: 3x22, 1x15 Depth In: 132.0 m Depth Out: 755.0 m Drilled 623.0 m in 26.8hrs Grade: 2-2-WT-A-1-I-NO-TD					130		MD: 204.75 m    Azi: 355.69° TVD: 204.7 m      Incl: 0.52°		
WOB: 1-10 klbf RPM: 52-108 GPM: 240-1150 SPP: 32-1700 psi					140		Drill with seawater & Hi-Vis sweeps. Returns to seabed 97.0m - 755.0m		
					150				
					160				
					170				
					180				
					190				
					200				
					210				
					220				
					230				
					240				
					250				



WOB: 1-17 klbf  
RPM: 108-138  
GPM: 1150-1212  
SPP: 1635-1890 psi

23/06/08

WOB: 12-20 klbf  
RPM: 135-138  
GPM: 1165-1195  
SPP: 1275-1862 psi

MD: 321.74 m	Azi: 145.66°
TVD: 321.7 m	Incl: 2.44°

Drill with seawater & Hi-Vis sweeps.  
Returns to seabed 97.0m - 755.0m

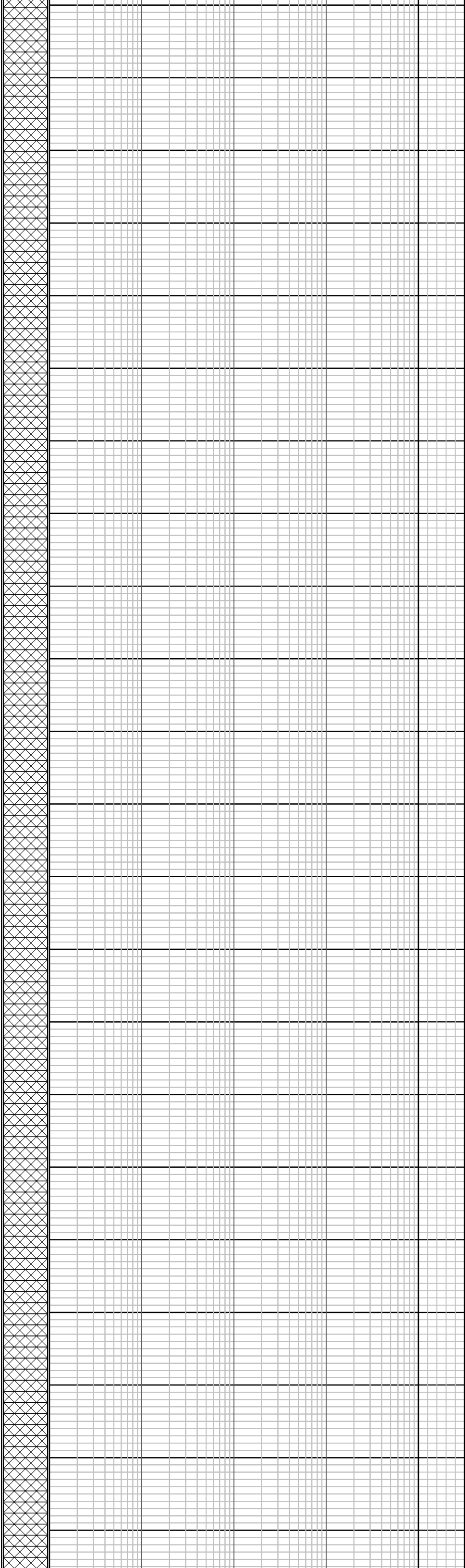
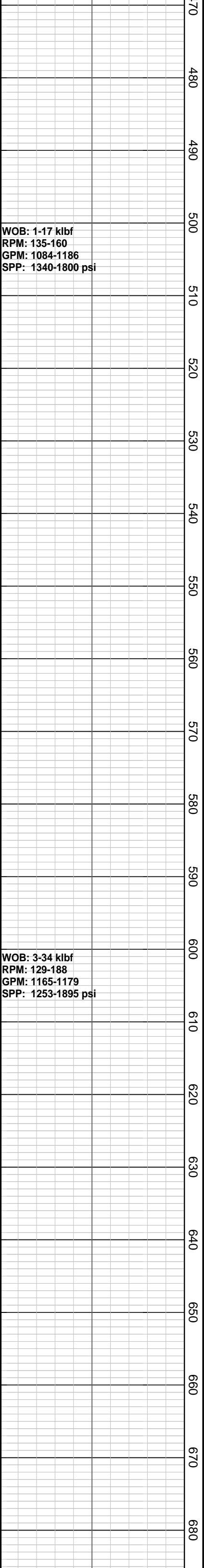
MD: 324.05 m	Azi: 189.14°
TVD: 324.6 m	Incl: 0.78°

MD: 382.91 m	Azi: 326.57°
TVD: 382.9 m	Incl: 0.23°

MD: 412.77 m	Azi: 250.06°
TVD: 412.7 m	Incl: 0.34°

Drill with seawater & Hi-Vis sweeps.  
Returns to seabed 97.0m - 755.0m

MD: 442.90 m	Azi: 118.87°
TVD: 442.9 m	Incl: 0.19°



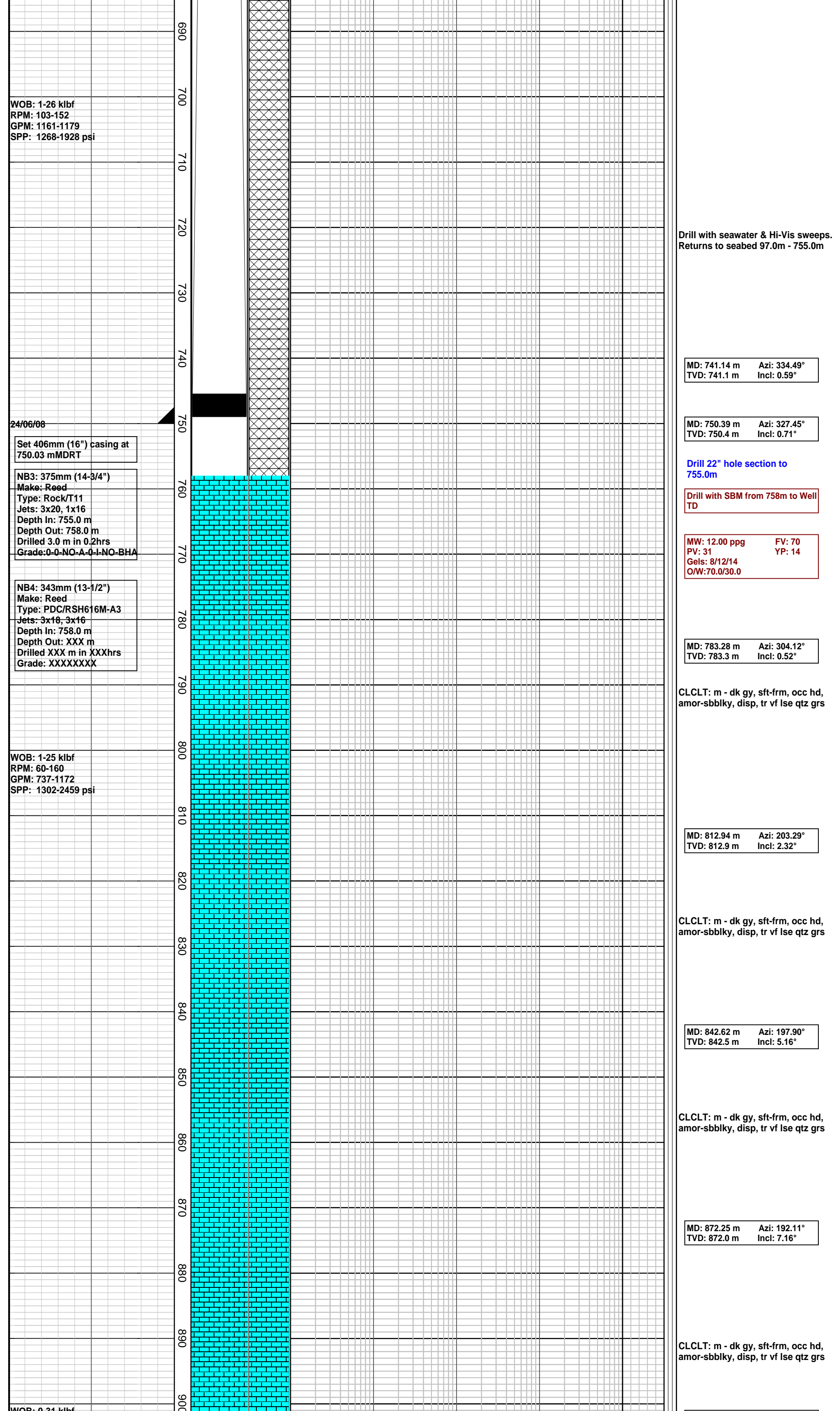
Drill with seawater & Hi-Vis sweeps.  
Returns to seabed 97.0m - 755.0m

MD: 531.83 m	Azi: 328.15°
TVD: 531.8 m	Incl: 0.85°

MD: 563.30 m	Azi: 289.41°
TVD: 563.3 m	Incl: 0.97°

Drill with seawater & Hi-Vis sweeps.  
Returns to seabed 97.0m - 755.0m

MD: 651.66 m	Azi: 355.43°
TVD: 651.6 m	Incl: 0.44°



WOB: 0-31 klbf  
RPM: 97-129  
GPM: 929-1044  
SPP: 2063-2666 psi

WOB: 2-35 klbf  
RPM: 127-130  
GPM: 966-1057  
SPP: 2284-2838 psi

WOB: 2-36 klbf  
RPM: 127-140  
GPM: 965-1067  
SPP: 2237-2284 psi

910  
920  
930  
940  
950  
960  
970  
980  
990  
1000  
1010  
1020  
1030  
1040  
1050  
1060  
1070  
1080  
1090  
1100  
1110

MD: 901.94 m    Azi: 183.91°  
TVD: 901.4 m    Incl: 8.22°

CLCLT: m - dk gy, sft-frm, occ hd,  
amor-sbblky, disp, tr vf lse qtz grs

MD: 931.42 m    Azi: 179.91°  
TVD: 930.5 m    Incl: 10.19°

CLCLT: lt - m gy,v sft-sft,  
amor-sbblky, disp, tr vf lse qtz gns

MD: 960.94 m    Azi: 179.75°  
TVD: 959.4 m    Incl: 13.95°

CLCLT: lt m gy, v sft-sft, amor-sbblky,  
disp, tr vf lse qtz grs

MD: 990.68 m    Azi: 178.95°  
TVD: 988.0 m    Incl: 17.52°

MW: 11.90 ppg    FV: 85  
PV: 32    YP: 24  
Gels: 11/12/12  
O/W:65.0/35.0

CLCLT: lt m gy, v sft-sft, amor-sbblky,  
disp, tr vf lse qtz grs

MD: 1020.40 m    Azi: 177.48°  
TVD: 1016.0 m    Incl: 20.88°

CLCLT: lt m gy, v sft-sft, amor-sbblky,  
disp, tr vf lse qtz grs

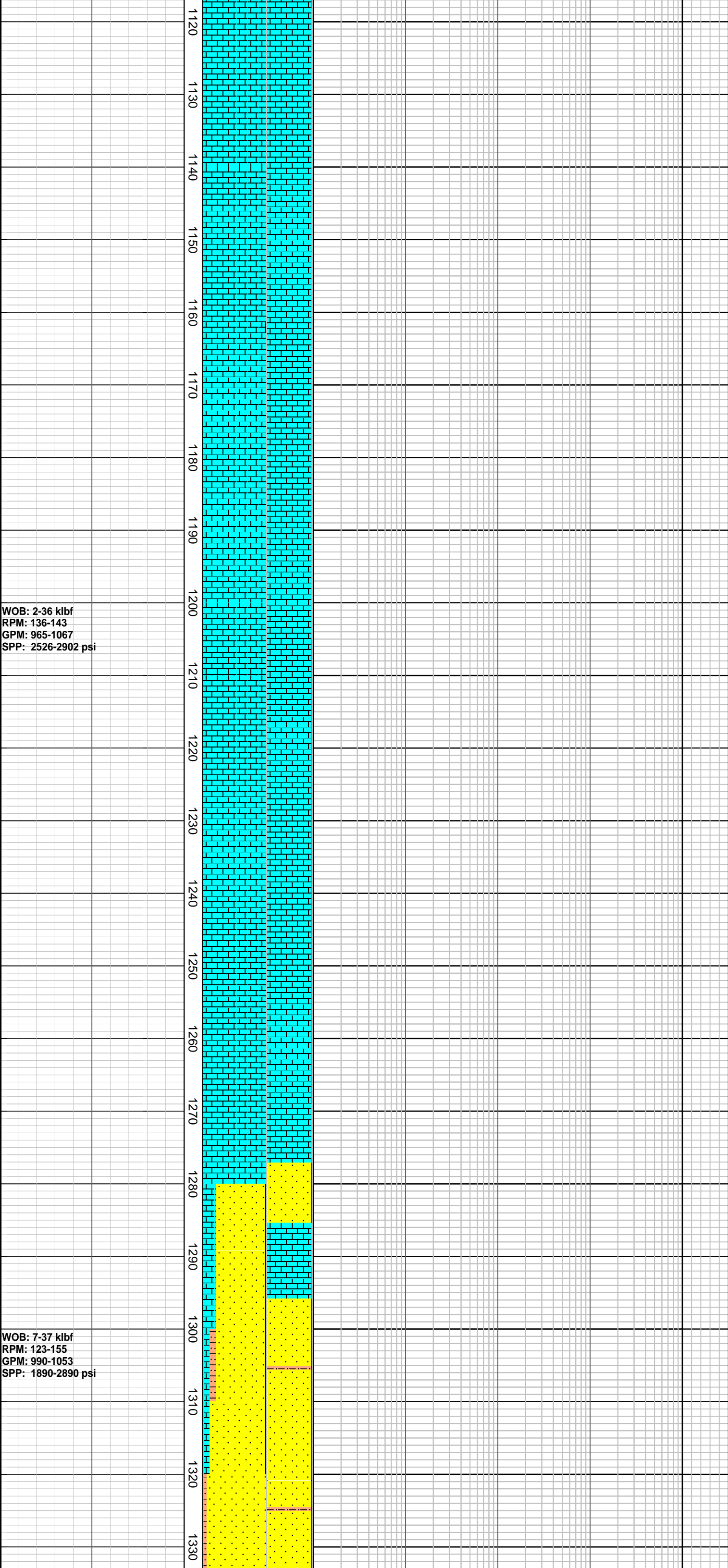
MD: 1050.8 m    Azi: 176.64°  
TVD: 1043.4 m    Incl: 24.28°

CLCLT: lt m gy, v sft-sft, amor-sbblky,  
disp, tr vf lse qtz grs

MD: 1078.64 m    Azi: 178.42°  
TVD: 1069.30 m    Incl: 25.70°

CLCLT: lt m gy, occ wh, v sft-sft,  
amor-sbblky, disp, tr glauc, tr carb  
spks, tr vf lse qtz grs

MD: 1108.28 m    Azi: 180.79°  
TVD: 1095.9 m    Incl: 26.85°



CLCLT:lt m gy, occ wh, v sft-sft, amor-sbblky, disp, tr glauc, tr carb spks, tr vf lse qtz grs

MD: 1137.39 m      Azi: 182.43°  
TVD: 1121.8 m      Incl: 27.64°

MD: 1166.97 m      Azi: 183.83°  
TVD: 1147.9 m      Incl: 28.48°

CLCLT: lt m gy, occ wh, v sft-sft, amor-sbblky, disp, tr glauc, tr carb spks

MD: 1196.40 m      Azi: 184.58°  
TVD: 1173.60 m      Incl: 29.46°

CLCLT: lt m gy, occ wh, v sft-sft, amor-sbblky, disp, tr glauc, tr carb spks, tr vf lse qtz grs

MD: 1225.95m      Azi: 185.46 °  
TVD: 1199.30 m      Incl: 30.16°

MW: 11.90 ppg      FV: 76  
PV: 35      YP: 33  
Gels: 15/19/--  
O/W:67.5/32.5

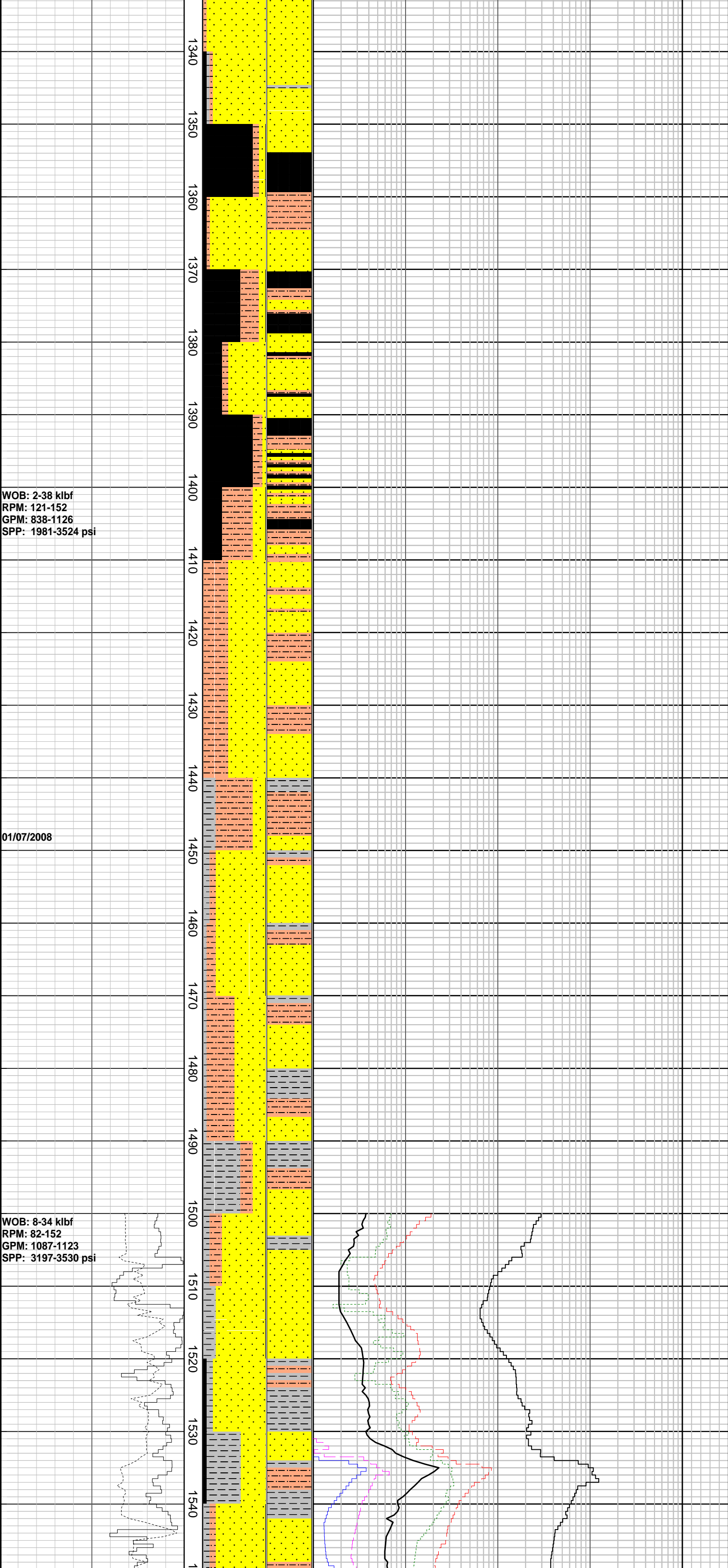
CLCLT: lt m gy, occ wh, v sft-sft, amor-sbblky, disp, tr glauc, tr carb spks, tr vf lse qtz grs

MD: 1285.37m      Azi: 186.70°  
TVD: 1250.80 m      Incl: 30.03°

SST: lse, wh-v lt gy,clr-trnsl grs, occ opq, v f-m, dom f, mod srt, sbang-rndd, qtz w/ mntr fspr & lit, rr agg cmt w/ hd blk-hem min, hd. mntr v microxln pyr nod, tr inf por, no shw crs qtz grs, sb-rndd, tr

MD: 1315.16m      Azi: 187.70°  
TVD: 1276.4 m      Incl: 31.09°

SLTST: dk brn gy, frm-mod hd, argl, slily carb, tr pyr



MD: 1344.99m      Azi: 187.53°  
TVD: 1302.70 m      Incl: 31.21°

COAL: blk, mod dull, hd, blk

SLTST: dk brn gy, frm-mod hd, argl, slily carb

MD: 1374.68m      Azi: 184.92°  
TVD: 1327.4 m      Incl: 30.42°

SST: lse, wh-v lt gy, clr-trnsl grs, occ opq, v f-m, dom f, mod srt, sbang-rnnd, qtz w/ mnf fspr & lit, mnf v crs qtz grs, fr inf por, no shw

COAL: blk, frm, grd - carb Slstst

MD: 1404.59m      Azi: 183.00°  
TVD: 1353.3 m      Incl: 30.04°

SST: lse, wh-v lt gy, clr-trnsl grs, occ opq, v f-m, dom f, mod srt, sbang-rnnd, qtz w/ mnf fspr & lit, mnf v crs qtz grs, fr inf por, no shw

MW: 12.00 ppg      FV: 78  
PV: 37      YP: 37  
Gels: 15/20/--  
O/W:65.9/34.1

SLTST: dk brn gy, sft - frm, blk - sbbly, argl, slily carb, tr pyr

MD: 1433.94m      Azi: 182.29°  
TVD: 1378.5 m      Incl: 31.67°

CLYST: wh - lt gy, v sft - sft, amor - sbbly, disp

SST: lse qtz gr, wh, trnsp-trnsl, vf-v crs, pred f-m, hd-v hd, ang-rnnd, prly srt, fr inf por, no shw

MD: 1463.79m      Azi: 181.20°  
TVD: 1404.0 m      Incl: 30.65°

SLTST: dk brn gy, sft-frm, blk-sbbly, argl, slily carb, tr pyr

CLYST: wh-lt gy, v sft-sft, amor-sbbly, disp

SST: lse qtz gr, wh, trnsp-trnsl, vf-v crs, pred f-m, hd-v hd, ang-rnnd, prly srt, fr inf por, no shw

MD: 1493.62m      Azi: 180.72°  
TVD: 1429.80 m      Incl: 30.04°

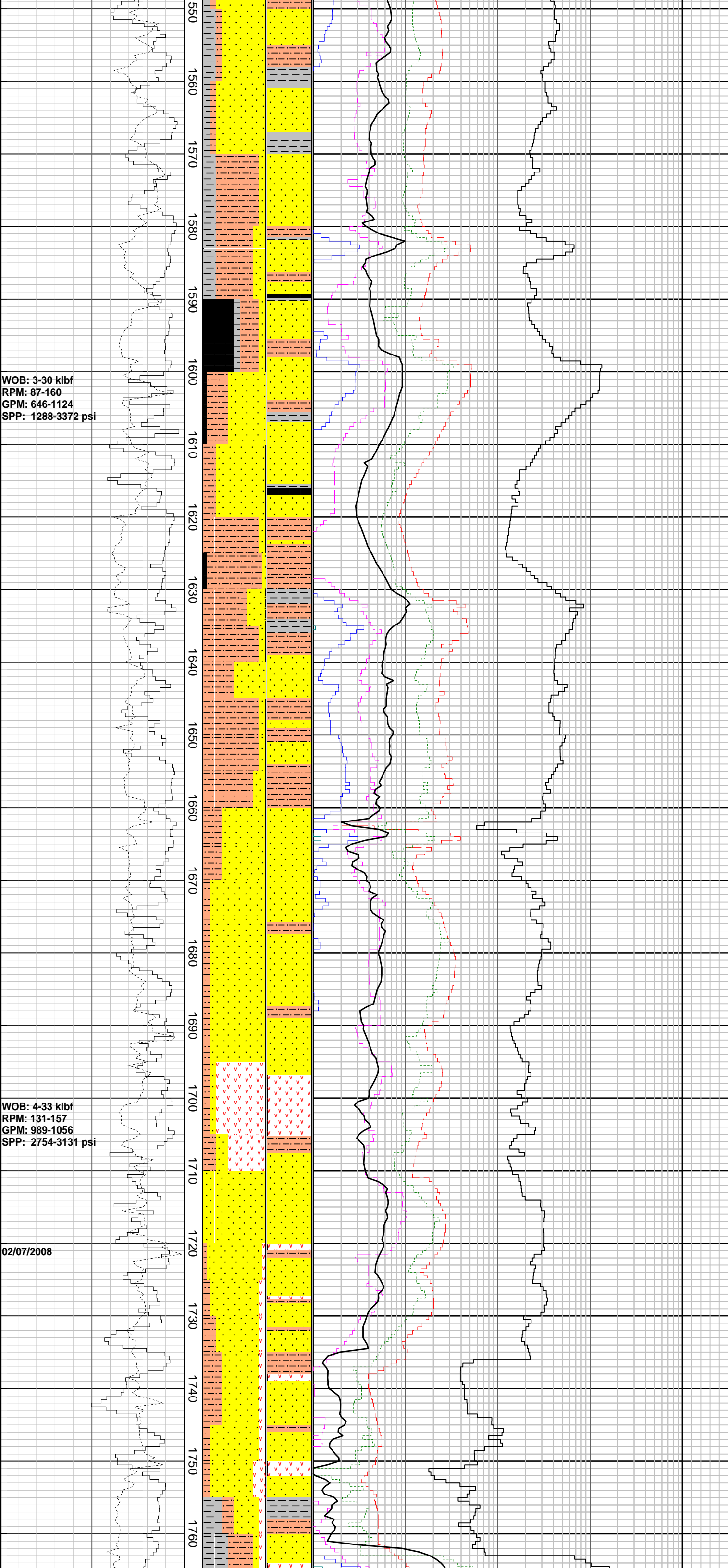
CLYST: wh-lt gy, v sft-sft, amor-sbbly, disp

SST: lse qtz grs, wh-v lt gy, clr-trnsl, occ opq, vf-v crs, rnnd-sbrnnd, ang i/p, sbsph-sph, mod srt, tr pyr nod, fr inf por, no show

MD: 1523.11m      Azi: 181.58°  
TVD: 1455.36 m      Incl: 30.08°

SLTST: m dk gy-dk gy, sft-frm, sbbly argl, carb i/p





WOB: 3-30 klbf  
RPM: 87-160  
GPM: 646-1124  
SPP: 1288-3372 psi

WOB: 4-33 klbf  
RPM: 131-157  
GPM: 989-1056  
SPP: 2754-3131 psi

02/07/2008

MD: 1553.11m    Azi: 181.81°  
TVD: 1481.2 m    Incl: 30.38°

SST: lse qtz grs, wh-v lt gy, clr-trnsl, occ opq, vf-v crs, rndd-sbrndd, ang i/p, sbsph-sph, mod srt, tr pyr nod, fr inf por, no show

MD: 1583.05m    Azi: 183.44°  
TVD: 1507.0 m    Incl: 30.31°

SLTST: m gy-brnsh gy, fri-mod frm, amor-sbblky, com argl mtrx, tr micrxlr pyr, mnř carb frag & lam, grd to argl Sltst

MD: 1612.84m    Azi: 184.08°  
TVD: 1532.8 m    Incl: 30.34°

COAL: blk-brnsh blk, frm, blkȳ-sbblky erthy-sbvit lus, brit

CLYST: m gy-m dk gy, mod frm, amor-sbblky, mnř qtz slt, tr carb frag, non calc

SLTST: m gy-brnsh gy, fri-mod frm, amor-sbblky, com argl mtrx, tr micrxlr pyr, mnř carb frag & lam, grd to argl Sltst

MD: 1642.12m    Azi: 183.53°  
TVD: 1558.0 m    Incl: 30.48°

SST: qtz, wh-v lt gy, dom lse, tr sft, m-v crs, pred crs, mod srt, ang-sbang mnř sbrndd, low-mod spsh, tr sft agg w/ argl mtrx, tr intgran pyr cmt, tr pyr grs, gd inf por, no shws

MD: 1671.81m    Azi: 182.75°  
TVD: 1583.60 m    Incl: 30.16°

VOLC: off wh, lt gy-lt gn, speck gy-dk gy, sft-mod frm, occ v sft, sbblky-blky

MD: 1701.38m    Azi: 181.97°  
TVD: 1609.20 m    Incl: 29.96°

SST: qtz, wh-v lt gy, trnsř-trnsl, dom lse, tr sft, m-v crs, pred crs, mod srt, ang-sbang, mnř sbrndd, low-mod spsh, tr pyr grs, gd inf por, no shw

MD: 1730.84m    Azi: 182.20°  
TVD: 1634.70m    Incl: 30.49°

VOLC: off wh, lt gy-lt gn, speck gy-dk gy, sft-mod frm, occ v sft, sbblky-blky

MD: 1760.64m    Azi: 183.16°  
TVD: 1660.40m    Incl: 30.44°



